

## APPENDIX 1

### The Name of Students of Experimental Group

No	Name	Code
1	ADLININGTIYAS N.	E-01
2	ALEXA QOTHRUNIA	E-02
3	ALFIN SABRIANUR AMNI	E-03
4	ANDIK SAPUTRA	E-04
5	AULIA SAPUTRI	E-05
6	DIMAS ANGGA ADREANSYAH	E-06
7	DIMAS HARDIANSYAH	E-07
8	DUWIK IKHSAN SANTIKO	E-08
9	DYAH AYU SUPITA	E-09
10	EXCEL DERI PRAYOGO	E-10
11	FAISAL AKHMAD RAMADHAN	E-11
12	HANUNG IRWANSYAH	E-12
13	INDAH NURMALANY	E-13
14	INTI NUR SOLEHA	E-14
15	KARTIKA SARI	E-15
16	MAINANDA SAPUTRA	E-16
17	M. ABDUL AZIZ	E-17
18	M. ULUMUDDIN	E-18
19	NIA ANAMTA	E-19
20	NUR FAIZAH	E-20
21	NURKHAN SIDIQ SAPUTRA	E-21
22	RAYHAN FERDIANSYAH	E-22
23	RENDI FARMAWAN	E-23
24	RYIYAN SAPUTRA	E-24
25	TRIANA ALYATUS ZAHRO	E-25
26	VICO VIANO ARVIANSYAH	E-26
27	WINDA AYU LISTIYAN	E-27
28	LIFIA ADELIA PUTRI	E-28
29	INES INTAN NURDIANA	E-29

**APPENDIX 1 A**  
**The Name of Students of Control Group**

<b>No</b>	<b>Name</b>	<b>Code</b>
1	A SABILUL HUDA	C-01
2	AFMAT BACHTIYAR	C-02
3	A IRFAN ARDIANSYAH	C-03
4	A RIKO STEFANI	C-04
5	A ZAENAL ILHAM	C-05
6	AISYAH ALYA AGUSTIN	C-06
7	ARSYAH JULIO ARDANA	C-07
8	BRIAN ARDIANYSAH	C-08
9	DEVI SALSA MAULIDA UTAMI	C-09
10	DINDA SAKIRANASALSABILA	C-10
11	DITA NOVIANA	C-11
12	FATIKA RIZQI HERAWATI	C-12
13	FITA PUJI ASTUTIK	C-13
14	IBNU NOVITA HADI SANJAYA	C-14
15	IMELDA FLORENSIA Y	C-15
16	JAROT INDRIANTO	C-16
17	M SHOLAHUDIN LUTFI	C-17
18	M DAI KHOIRI	C-18
19	M AIDTYA PRATAMA	C-19
20	M FADLI ADIANZA	C-20
21	M WAHYU AKBAR	C-21
22	NAIL NAMIRA RANJANI	C-22
23	NEFRILIFIAN	C-23
24	SALSABILA DHE APRILIA	C-24
25	SHINTYA FARA NURMALA	C-25
26	UMI SALMA	C-26

## APPENDIX 2

### Try-out test

#### PETUNJUK UMUM

1. Write the name and absence number on the answer sheet!
2. Read the question first before answering!
3. The amount of matter is 30 multiple choices!
4. Please check back your answer once more and collect to me!

#### PETUNJUK KHUSUS

Choose the correct answer by crossing a, b, c, or d !

( pilihlah jawaban yang benar dengan menyilang a, b, c, atau d!

1. Good morning in Indonesia means.....
  - a. Selamat pagi
  - b. Selamat sore
  - c. Selamat siang
  - d. Selamat malam
2. Good afternoon in Indonesia means....
  - a. Selamat pagi
  - b. Selamat sore
  - c. Selamat siang
  - d. Selamat malam
3. Ina : Hi, Oca, how are you?  
Oca : Hi, Ina, I am fine, and you?  
Ina : I am fine too, thank you.  
“how are you?” in Indonesia is....
  - a. Selamat pagi
  - b. Aku baik

- c. Apa kabarmu?
  - d. Terima kasih
4. "Thank you" in Indonesia is...
- a. Selamat pagi
  - b. Aku baik
  - c. Apa kabar mu?
  - d. Terima kasih
5. Misca : Hi, my name is Mischa. What is your name?  
Donita : Hi, I am Donita. ....  
Mischa: Nice to meet you too
- a. I am fine
  - b. How are you?
  - c. Nice to meet you
  - d. Good bye
6. "What is your name?" in Indonesia means....
- a. Apa kabar?
  - b. Siapa namamu?
  - c. Selamat pagi
  - d. Selamat tinggal
7. "Nice to meet you" in Indonesia is...
- a. Senang bertemu denganmu
  - b. Halo, apa kabarmu?
  - c. Selamat tinggal
  - d. Aku baik-baik saja
8. My name is Adi. I am a student.  
Student in Indonesia is...
- a. Murid
  - b. Guru
  - c. Polisi
  - d. dokter

**Read the text and answers the question 9-12!**

Hi, I am Bella Savira. My friends call me Bella. I am 14 years. I live on Anggrek street no 29 Sragen. My hobby is reading. My house is not far from my school. I am the first grade of Mts Mambaul Ulum. I go to school by bike.

9. Who is the name of the girl?
- a. Eva                      b. Sopia                      c. Bella                      d. Vera
10. Where does she lives? She lives in ....
- a. Her house  
b. Jl. Anggrek no 29  
c. Jl. Mawar no 9  
d. Jl. Anggrek no 19
11. Where is Bella school? She goes to school at....
- a. MTs Mambaul Ulum  
b. SMP Mambaul Ulum  
c. SMA Mambaul Ulum  
d. MA Mambaul Ulum
12. What is Bella Hobby? Her hobby is...
- a. Writing    b. Cooking                      c. Swimming                      d. Reading

**Read the text and answer the question number 13- 16!**

There is a garden in my school. The garden is on the east side of the school building. Mr. Indarto is a gardener. He plants some fruit trees such as: mango, avocado, apple etc. he also plants some flowers such as: roses, jasmines and orchids. In the break time many students play in the garden.

13. Where is the location of the garden? It's on the ... side of the school building.
- a. East                      b. West                      c. South                      d. North
14. How many flowers mentioned in the text?
- a. 2                              b. 4                              c. 3                              d. 5
15. "He plants some fruit trees ... (line 3) "He" refers to ...

- a. The writer      b. The student      c. Mr. Indarto      d. The garden

16. "Mr. Indarto is a gardener". The underline word means...

- a. Petani      b. Tukang kebun      c. dokter      d. tukang parker

**Read the text and answer the question number 17-20!**

The students usually ... (17) to library during the break of lesson. They can borrow or ... (18) the books. The students should ... (19) the books on time or they have to ... (20) the fine if the books are late to return.

17. a.go      b. have      c.return      d. play  
 18. a.buy      b. have      c.sell      d. read  
 19. a.buy      b. have      c.return      d. sell  
 20. a.play      b. pay      c.fly      d. buy  
 21. She ... to school every morning.  
 a. Go      b. Do      c. goes      d. does  
 22. Ari : hello Vira. Nice to meet you  
 Vira : ....  
 a. Nice to meet you      b. I'm fine      c. It's ok      d. Good night  
 23. He .... At 5 o'clock every morning.  
 a. Get up      b. Gets up      c. got up      d. getting up  
 24. Rita : who is he?  
 Deni : he ... Mr. West  
 a. Is      b. Are      c.am      d. was  
 25. Mia :where were you born?  
 Ali : ....  
 a. I was born in Solo  
 b. I am born in Solo  
 c. You was born in Solo  
 d. You are born in Solo

26. David : Hi, Lisa. How is your life?

Lisa : Hi, David, I am fine thanks.

And you?

David : \_\_\_\_\_, thank you

- a. Good day            c. sure
- b. I'm fine too        d. of course

27. You may introduce yourself in front of the classroom with the following expression \_\_\_\_\_.

- a. Nice to meet you
- b. Let me introduce myself
- c. See you later
- d. I'm fine

28. When going out with her friends, Siska says to her mother : \_\_\_\_\_

- a. Good morning, mum
- b. Good bye, mum
- c. Thank you, mum
- d. See you tomorrow

29. Rida : Where's my pencil case?

Rina : \_\_\_\_\_.

Rida : Thanks

- a. It's here            c. Here I am
- b. Here you are        d. let me see

30. Which one of the following expressions is regarded as greeting?

- a. Thank you            c. good morning
- b. I'm fine. Thanks    d. good bye

## APPENDIX 3

### Pre-test and Post-test

#### PETUNJUK UMUM

1. Write the name and absence number on the answer sheet!
2. Read the question first before answering!
3. The amount of matter is 30 multiple choices!
4. Please check back your answer once more and collect to me!

#### PETUNJUK KHUSUS

Choose the correct answer by crossing a, b, c, or d !

(pilihlah jawaban yang benar dengan menyilang a, b, c, atau d!

1. Misca : Hi, my name is Mischa. What is your name?

Donita : Hi, I am Donita. ....

Mischa: Nice to meet you too

- |                 |                     |
|-----------------|---------------------|
| a. I am fine    | c. Nice to meet you |
| b. How are you? | d. Good bye         |

2. Nice to meet you” in Indonesia is...

- a. Senangbertemudenganmu
- b. Halo, apakabarmu?
- c. Selamattinggal
- d. Akubaik-baiksaja

1. My name is Adi. I am a student.

Student in Indonesia is...

- |          |         |           |           |
|----------|---------|-----------|-----------|
| b. Murid | b. Guru | c. Polisi | d. Dokter |
|----------|---------|-----------|-----------|

**Read the text and answers the question 4-6!**



Hi, I am Bella Savira. My friends call me Bella. I am 14 years. I live on Anggrek street no 29 Sragen. My hobby is reading. My house is not far from my school. I am the first grade of Mts Mambaul Ulum. I go to school by bike.

2. Who is the name of the girl?
  - a. Eva
  - b. Sopia
  - c. Bella
  - d. Vera
3. Where does she lives? She lives in ....
  - a. Her house
  - b. Jl. Anggrek no 29
  - c. . Jl. Mawar no 9
  - d. Jl. Anggrek no 19
4. What is Bella Hobby? Her hobby is...
  - a. Writing
  - b. Cooking
  - c. Swimming
  - d. Reading

**Read the text and answer the question number 7-8!**

There is a garden in my school. The garden is on the east side of the school building. Mr. Indarto is a gardener. He plants some fruit trees such as: mango, avocado, apple etc. he also plants some flowers such as: roses, jasmines and orchids. In the break time many students play in the garden.

5. Where is the location of the garden? It's on the ... side of the school building.
  - a. East
  - b. West
  - c. South
  - d. North
6. "Mr. Indarto is a gardener". The underline word means...
  - b. Petani
  - c. TukangKebun
  - d. Dokter
  - e. Tukang Parker

**Read the text and answer the question number 10-11!**



**APPENDIX 4**  
**ANSWER KEY OF TRY-OUT TEST**

1. A	11. A	21.C
2. B	12. D	22.A
3. C	13.A	23.B
4. D	14.C	24.A
5. C	15.C	25.A
6. B	16.B	26.B
7. A	17.A	27.B
8. A	18.D	28.B
9. C	19.C	29.B
10. B	20.B	30.C

**ANSWER KEY OF PRE-TEST AND POST-TEST**

1. C	11. C
2. A	12. A
3. A	13. B
4. C	14. C
5. B	
6. D	
7. A	
8. B	
9. A	
10. D	

**APPENDIX 5**  
**COMPUTATION OF VALIDITY AND RELIABILITY OF TEST**

N o	1	2	3	4	5	6	7	8	9	10	11	12	13	14	15	16	17	18	19	20	21	22	23	24	25	26	27	28	29	30	Y	Y2
1	1	0	1	1	1	1	1	1	1	1	0	1	1	0	0	1	1	1	0	0	1	1	0	1	1	1	0	1	1	1	22	484
2	1	0	1	1	1	1	1	1	1	1	0	1	1	0	0	1	1	1	0	0	1	1	1	1	1	1	1	1	1	1	24	576
3	1	1	0	1	1	0	1	1	0	0	1	0	1	1	0	0	1	0	1	0	0	1	0	1	0	0	1	1	0	1	16	256
4	1	0	0	1	1	1	1	1	1	0	0	1	1	0	1	1	1	0	0	0	0	0	1	0	1	1	1	1	0	0	16	256
5	1	1	0	1	0	1	0	0	1	1	1	1	1	0	1	0	1	1	1	1	0	0	1	1	1	0	1	1	0	0	19	361
6	1	0	1	1	0	1	0	1	1	1	0	0	1	0	0	1	1	1	0	0	1	0	1	1	1	1	0	1	1	0	18	324
7	1	0	1	1	0	1	1	1	1	1	0	1	1	0	1	1	0	1	0	0	0	0	0	1	0	1	1	0	1	18	324	
8	1	0	1	1	1	1	1	1	1	1	0	1	1	0	0	1	1	1	0	0	0	1	1	1	1	0	0	1	1	0	20	400
9	1	0	1	1	1	1	1	1	1	1	0	1	1	0	1	0	1	0	0	1	1	0	0	1	0	1	0	0	0	18	324	
10	0	1	1	1	0	1	0	0	0	0	0	0	0	0	0	0	0	0	1	0	0	1	1	1	0	1	0	0	1	0	10	100
11	1	0	1	1	0	1	1	1	1	0	0	1	1	0	1	1	1	1	1	1	1	1	0	1	1	1	1	1	1	0	23	529
12	1	0	1	1	0	1	0	0	0	0	1	0	0	0	0	1	1	0	0	0	0	0	0	1	1	1	1	0	1	0	12	144
13	1	0	1	1	1	1	1	1	1	1	0	1	1	1	0	1	1	1	0	0	1	1	1	1	1	0	1	1	0	1	23	529
14	1	0	1	1	1	1	1	1	1	1	1	0	0	0	1	1	1	1	1	1	1	1	0	0	1	1	0	0	1	1	22	484
15	1	1	1	1	1	1	1	1	1	1	1	1	1	0	1	1	1	1	0	0	0	1	1	1	1	0	1	1	0	1	24	576
16	0	1	0	0	1	0	0	1	0	0	1	0	1	1	1	0	0	1	1	1	1	1	0	1	1	1	0	0	1	1	17	289
17	0	1	1	1	1	1	0	1	0	1	1	0	1	0	1	1	1	1	1	1	1	0	1	1	1	0	0	1	0	0	20	400
18	1	0	1	1	1	1	1	1	1	1	1	1	1	1	1	0	1	0	0	0	0	0	1	1	1	0	1	0	1	1	22	484















q2 6	Pearson Correlation	- 0.159	- 0.228	- 0.044	- 0.159	- 0.216	0.1 39	- 0.362	- 0.044	0.0 64	- 0.305	- 0.163	- 0.091	- 0.306	0.0 05
	Sig. (2- tailed)	0.4 09	0.2 34	0.8 19	0.4 09	0.2 60	0.4 71	0.0 54	0.8 19	0.7 41	0.1 08	0.3 97	0.6 39	0.1 06	0.9 79
	N	29	29	29	29	29	29	29	29	29	29	29	29	29	29
q2 7	Pearson Correlation	0.2 43	- 0.087	- 0.228	0.0 42	- 0.070	- 0.044	- 0.070	- 0.044	0.0 64	- 0.155	- 0.024	0.2 19	0.1 49	0.0 05
	Sig. (2- tailed)	0.2 05	0.6 52	0.2 35	0.8 30	0.7 17	0.8 19	0.7 17	0.8 19	0.7 41	0.4 22	0.9 01	0.2 53	0.4 40	0.9 79
	N	29	29	29	29	29	29	29	29	29	29	29	29	29	29
q2 8	Pearson Correlation	0.3 41	- 0.127	0.0 53	0.3 41	0.2 37	0.2 45	.38 9*	0.0 53	0.3 64	.45 4*	- 0.221	0.3 64	.46 8*	0.0 16
	Sig. (2- tailed)	0.0 70	0.5 12	0.7 85	0.0 70	0.2 16	0.2 00	0.0 37	0.7 85	0.0 52	0.0 13	0.2 49	0.0 52	0.0 10	0.9 33
	N	29	29	29	29	29	29	29	29	29	29	29	29	29	29
q2 9	Pearson Correlation	- 0.107	- 0.353	0.2 08	- 0.313	- 0.119	- 0.169	- 0.119	- 0.169	- 0.164	- 0.217	- 0.010	- 0.164	- 0.266	0.0 64
	Sig. (2- tailed)	0.5 82	0.0 60	0.2 80	0.0 99	0.5 40	0.3 82	0.5 40	0.3 82	0.3 94	0.2 58	0.9 60	0.3 94	0.1 64	0.7 43
	N	29	29	29	29	29	29	29	29	29	29	29	29	29	29
q3 0	Pearson Correlation	0.0 14	0.1 11	0.1 07	- 0.186	.46 1*	- 0.076	0.3 15	0.1 07	0.0 21	0.0 98	0.1 77	0.1 76	0.1 25	.49 9**
	Sig. (2- tailed)	0.9 43	0.5 66	0.5 80	0.3 33	0.0 12	0.6 97	0.0 96	0.5 80	0.9 13	0.6 14	0.3 58	0.3 62	0.5 18	0.0 06
	N	29	29	29	29	29	29	29	29	29	29	29	29	29	29
tot al	Pearson Correlation	0.3 58	- 0.191	0.3 41	0.1 80	.41 3*	0.3 14	.47 7**	.42 2*	.59 8**	.59 0**	- 0.159	.55 3**	.48 9**	0.0 52
	Sig. (2- tailed)	0.0 56	0.3 20	0.0 70	0.3 50	0.0 26	0.0 97	0.0 09	0.0 22	0.0 01	0.0 01	0.4 10	0.0 02	0.0 07	0.7 89
	N	29	29	29	29	29	29	29	29	29	29	29	29	29	29

\*continuation item number 15 to 30

q15	q16	q17	q18	q19	q20	q21	q22	q23	q24	q25	q26	q27	q28	q29	q30	total
-	.47	.61	-	-	-	0.0	0.0	-	-	0.0	-	0.2	0.3	-	0.0	0.3
0.0	5**	2**	0.0	.41	.38	14	99	0.1	0.0	08	0.1	43	41	0.1	14	58
80			80	4*	0*			33	23		59			07		
0.6	0.0	0.0	0.6	0.0	0.0	0.9	0.6	0.4	0.9	0.9	0.4	0.2	0.0	0.5	0.9	0.0
81	09	00	81	26	42	43	08	91	05	67	09	05	70	82	43	56
29	29	29	29	29	29	29	29	29	29	29	29	29	29	29	29	29
0.0	-	-	0.0	0.1	0.1	-	-	0.1	0.0	-	-	-	-	-	0.1	-
20	.50	0.1	0.20	0.1	0.1	0.0	0.0	0.1	0.0	0.1	0.2	0.0	0.1	0.3	11	0.1
	8**	73		69	93	29	65	37	49	81	28	87	27	53		91
0.9	0.0	0.3	0.9	0.3	0.3	0.8	0.7	0.4	0.8	0.3	0.2	0.6	0.5	0.0	0.5	0.3
17	05	71	17	81	16	81	39	78	02	49	34	52	12	60	66	20
29	29	29	29	29	29	29	29	29	29	29	29	29	29	29	29	29
-	.59	0.0	0.2	-	-	0.2	0.0	0.1	-	.38	-	-	0.0	0.2	0.1	0.3
0.1	6**	33	45	0.1	0.0	90	19	73	0.2	3*	0.0	0.2	53	08	07	41
39				07	88				82		44	28				
0.4	0.0	0.8	0.2	0.5	0.6	0.1	0.9	0.3	0.1	0.0	0.8	0.2	0.7	0.2	0.5	0.0
72	01	64	00	80	48	27	20	71	39	41	19	35	85	80	80	70
29	29	29	29	29	29	29	29	29	29	29	29	29	29	29	29	29
-	.47	0.3	0.1	-	-	0.0	0.0	-	0.2	0.0	-	0.0	0.3	-	-	0.1
0.2	5**	47	31	0.0	0.1	14	99	0.1	01	08	0.1	42	41	0.3	0.1	80
90				14	64			33			59			13	86	
0.1	0.0	0.0	0.5	0.9	0.3	0.9	0.6	0.4	0.2	0.9	0.4	0.8	0.0	0.0	0.3	0.3
27	09	65	00	43	95	43	08	91	97	67	09	30	70	99	33	50
29	29	29	29	29	29	29	29	29	29	29	29	29	29	29	29	29
-	0.0	0.0	0.2	-	-	0.1	0.3	-	0.0	0.0	-	-	0.2	-	.46	.41
0.0	99	53	37	0.3	0.1	70	30	0.0	39	99	0.2	0.0	37	0.1	1*	3*
68				15	41			20			16	70		19		
0.7	0.6	0.7	0.2	0.0	0.4	0.3	0.0	0.9	0.8	0.6	0.2	0.7	0.2	0.5	0.0	0.0
24	08	85	16	96	67	77	80	17	40	08	60	17	16	40	12	26
29	29	29	29	29	29	29	29	29	29	29	29	29	29	29	29	29
-	.38	0.0	0.2	0.0	0.1	0.1	-	-	-	.38	0.1	-	0.2	-	-	0.3
0.1	3*	33	45	76	09	07	0.1	0.0	0.0	3*	39	0.0	45	0.1	0.0	14
39							69	13	77		44			69	76	
0.4	0.0	0.8	0.2	0.6	0.5	0.5	0.3	0.9	0.6	0.0	0.4	0.8	0.2	0.3	0.6	0.0
72	41	64	00	97	74	80	82	48	90	41	71	19	00	82	97	97
29	29	29	29	29	29	29	29	29	29	29	29	29	29	29	29	29
-	.43	0.2	-	-	-	0.1	.47	-	0.0	0.0	-	-	.38	-	0.3	.47
0.0	8*	45	0.0	0.3	0.2	70	9**	0.1	39	99	0.3	0.0	.38	0.1	15	7**
68			68	15	97			68			62	70	9*	19		
0.7	0.0	0.2	0.7	0.0	0.1	0.3	0.0	0.3	0.8	0.6	0.0	0.7	0.0	0.5	0.0	0.0
24	17	00	24	96	17	77	08	85	40	08	54	17	37	40	96	09
29	29	29	29	29	29	29	29	29	29	29	29	29	29	29	29	29
0.0	0.1	0.0	0.2	-	0.1	0.2	.39	-	0.1	-	-	-	0.0	-	0.1	.42
53	69	33	45	0.1	0.1	90	6*	0.1	27	0.0	0.0	0.0	53	0.1	07	2*
				07				98		44	44	44		69		



- 0.0 70	1	.38 3*	0.2 69	- 0.2 61	- 0.1 44	.42 3*	- 0.1 09	- 0.1 47	- 0.1 68	.43 5*	- 0.1 84	- 0.0 22	0.2 69	- 0.1 09	- 0.0 61	.39 7*
0.7 18		0.0 41	0.1 58	0.1 71	0.4 56	0.0 22	0.5 74	0.4 48	0.3 84	0.0 18	0.3 38	0.9 08	0.1 58	0.5 74	0.7 53	0.0 33
29	29	29	29	29	29	29	29	29	29	29	29	29	29	29	29	29
- 0.1 39	.38 3*	1	0.0 53	- 0.2 90	- 0.0 88	0.1 07	- 0.1 69	- 0.0 13	0.1 27	- 0.0 44	- 0.2 28	0.1 39	.62 9**	- 0.1 69	- 0.0 76	.39 5*
0.4 72	0.0 41		0.7 85	0.1 27	0.6 48	0.5 80	0.3 82	0.9 48	0.5 12	0.8 20	0.2 35	0.4 71	0.0 00	0.3 82	0.6 97	0.0 34
29	29	29	29	29	29	29	29	29	29	29	29	29	29	29	29	29
- 0.0 68	0.2 69	0.0 53	1	- 0.0 25	0.3 30	.46 1*	0.0 31	0.1 27	- 0.1 23	.43 8*	- 0.2 16	- 0.0 70	0.0 84	- 0.1 19	0.0 25	.47 7**
0.7 24	0.1 58	0.7 85		0.8 97	0.0 81	0.0 12	0.8 73	0.5 12	0.5 25	0.0 17	0.2 60	0.7 17	0.6 64	0.5 40	0.8 97	0.0 09
29	29	29	29	29	29	29	29	29	29	29	29	29	29	29	29	29
.41 1*	- 0.2 61	- 0.2 90	- 0.0 25	1	.69 4**	- 0.0 33	- 0.2 40	- 0.1 69	- 0.3 30	0.0 61	0.1 77	0.0 38	- 0.1 70	0.0 44	- 0.0 33	- 0.0 87
0.0 27	0.1 71	0.1 27	0.8 97		0.0 00	0.8 64	0.2 09	0.3 81	0.0 80	0.7 53	0.3 58	0.8 44	0.3 77	0.8 20	0.8 64	0.6 54
29	29	29	29	29	29	29	29	29	29	29	29	29	29	29	29	29
.48 7**	- 0.1 44	- 0.0 88	0.3 30	.69 4**	1	0.3 50	- 0.2 44	- 0.1 93	- 0.2 53	0.2 04	0.1 55	0.0 05	- 0.1 41	0.0 64	- 0.2 47	0.1 85
0.0 07	0.4 56	0.6 48	0.0 81	0.0 00		0.0 63	0.2 03	0.3 16	0.1 85	0.2 88	0.4 22	0.9 79	0.4 67	0.7 43	0.1 97	0.3 38
29	29	29	29	29	29	29	29	29	29	29	29	29	29	29	29	29
- 0.1 20	.42 3*	0.1 07	.46 1*	- 0.0 33	0.3 50	1	0.0 98	- 0.2 51	- 0.1 33	.42 3*	- 0.0 38	- 0.3 16	0.1 70	- 0.0 44	0.0 33	.45 6*
0.5 35	0.0 22	0.5 80	0.0 12	0.8 64	0.0 63		0.6 13	0.1 89	0.4 91	0.0 22	0.8 44	0.0 95	0.3 77	0.8 20	0.8 64	0.0 13
29	29	29	29	29	29	29	29	29	29	29	29	29	29	29	29	29
- 0.2 68	- 0.1 09	- 0.1 69	0.0 31	- 0.2 40	- 0.2 44	0.0 98	1	0.0 65	0.3 13	- 0.1 09	0.0 10	- 0.1 33	- 0.1 19	0.1 21	0.2 40	0.2 47
0.1 60	0.5 74	0.3 82	0.8 73	0.2 09	0.2 03	0.6 13		0.7 39	0.0 99	0.5 74	0.9 60	0.4 91	0.5 40	0.5 31	0.2 09	0.1 97
29	29	29	29	29	29	29	29	29	29	29	29	29	29	29	29	29
- 0.0 20	- 0.1 47	- 0.0 13	0.1 27	- 0.1 69	- 0.1 93	- 0.2 51	0.0 65	1	0.1 08	0.0 17	- 0.0 53	- 0.0 53	0.1 27	0.2 09	0.0 29	0.1 50
0.9 17	0.4 48	0.9 48	0.5 12	0.3 81	0.3 16	0.1 89	0.7 39		0.5 77	0.9 31	0.7 83	0.7 83	0.5 12	0.2 77	0.8 81	0.4 38



**APPENDIX 7**  
**VALIDITY OF TEST**

**Formula:**

$$r_{xy} = \frac{N\sum XY - (\sum X)(\sum Y)}{\sqrt{\{N\sum X^2 - (\sum X)^2\}\{N\sum Y^2 - (\sum Y)^2\}}}$$

The item test is valid if  $r_{xy} > r_{table}$

The following is the example of counting the validity of test number 5.

No	X	Y	X <sup>2</sup>	Y <sup>2</sup>	XY
1	1	22	1	484	22
2	1	24	1	576	24
3	1	16	1	256	16
4	1	16	1	256	16
5	0	19	0	361	0
6	0	18	0	324	0
7	0	18	0	324	0
8	1	20	1	400	20
9	1	18	1	324	18
10	0	10	0	100	0
11	0	23	0	529	0
12	0	12	0	144	0
13	1	23	1	529	23
14	1	22	1	484	22
15	1	24	1	576	24
16	1	17	1	289	17
17	1	20	1	400	20
18	1	22	1	484	22
19	0	19	0	361	0
20	1	23	1	529	23
21	0	17	0	289	0
22	0	19	0	361	0
23	1	24	1	576	24



24	1	17	1	289	17
25	1	22	1	484	22
26	1	22	1	484	22
27	0	21	0	441	0
28	1	19	1	361	19
29	1	19	1	361	19
SUM	19	566	19	11376	390

The value of  $r_{xy}$  is:

$$\begin{aligned}
 r_{xy} &= \frac{N\sum XY - (\sum X)(\sum Y)}{\sqrt{\{N\sum X^2 - (\sum X^2)\}\{N\sum Y^2 - (\sum Y^2)\}}} \\
 &= \frac{(29.390) - (19)(566)}{\sqrt{\{29.19 - (19)^2\}\{29.11376 - (566)^2\}}} \\
 &= \frac{11310 - 10754}{\sqrt{\{551 - 361\}\{329904 - 320356\}}} \\
 &= \frac{556}{\sqrt{(190)(9548)}} \\
 &= \frac{556}{\sqrt{1814120}} \\
 &= \frac{556}{1346.89} \\
 &= 0.4128
 \end{aligned}$$

**APPENDIX 8**  
**RELIABILITY OF THE TEST**

Formula:

$$r_{xy} = \frac{N\sum XY - (\sum X)(\sum Y)}{\sqrt{\{N\sum X^2 - (\sum X^2)\}\{N\sum Y^2 - (\sum Y^2)\}}}$$

$$r_{11} = \frac{2x \text{ rhh}}{(1+\text{rhh})}$$

The item test is valid if  $r_{xy} > r_{\text{table}}$

Based on the try-out table, it can be gotten:

$$\begin{aligned} r_{xy} &= \frac{N\sum XY - (\sum X)(\sum Y)}{\sqrt{\{N\sum X^2 - (\sum X^2)\}\{N\sum Y^2 - (\sum Y^2)\}}} \\ &= \frac{(29.390) - (19)(566)}{\sqrt{\{29.19 - (19)\}\{29.11376 - (566)^2\}}} \\ &= \frac{11310 - 10754}{\sqrt{\{551 - 361\}\{329904 - 320356\}}} \\ &= \frac{556}{\sqrt{(190)(9548)}} \\ &= \frac{556}{\sqrt{1814120}} \\ &= \frac{556}{1346.89} \\ &= 0.4128 \end{aligned}$$

$$\begin{aligned} r_{11} &= \frac{2x \text{ rhh}}{(1 + \text{rhh})} \\ &= \frac{2 \times 0.4128}{1 + 0.4128} \\ &= \frac{0.8256}{1.4128} \\ &= 0.584 \end{aligned}$$

For  $\alpha = 5\%$  with  $N=29$ , and  $r_{\text{table}} = 0.367$ . since the result of the  $r_{11}$  was higher than  $r_{\text{table}}$ , it was conclude that the try-out instrument was reliable.

**APPENDIX 9**  
**RENCANA PELAKSANAAN PEMBELAJARAN**

Sekolah : MTS Mambaul Ulum Mambak  
Mata pelajaran : Bahasa Inggris  
Kelas/semester : VII/1  
Alokasi waktu : 4x40 menit (2x pertemuan)

**A. KOMPETENSI INTI**

1. Menghargai dan menghayati ajaran agama yang dianutnya
2. Menghargai dan menghayati perilaku jujur, disiplin, tanggung jawab, peduli (toleransi, gotong royong), santun, percaya diri, dalam berinteraksi secara efektif dengan lingkungan sosial dan alam dalam jangkauan pergaulan dan keberadaannya.
3. Memahami pengetahuan (faktual, konseptual, dan prosedural) berdasarkan rasa ingin tahunya tentang ilmu pengetahuan, teknologi, seni, budaya terkait fenomena dan kejadian tampak mata.
4. Mencoba, mengolah, dan menyaji dalam ranah konkret (menggunakan, mengurai, merangkai, memodifikasi, dan membuat) dan ranah abstrak (menulis, membaca, menghitung, menggambar, dan mengarang) sesuai dengan yang dipelajari di sekolah dan sumber lain yang sama dalam sudut pandang/teori.

**B. KOMPETENSI DASAR**

3.1 Mengidentifikasi fungsi sosial, struktur teks, dan unsur kebahasaan teks interaksi interpersonal lisan dan tulis yang melibatkan tindakan menyapa, berpamitan, mengucapkan terimakasih, dan meminta maaf, serta menanggapi, sesuai dengan konteks penggunaannya

4.1 menyusun teks interaksi interpersonal lisan dan tulis sangat pendek dan sederhana yang melibatkan tindakan menyapa, berpamitan, mengucapkan terimakasih, dan meminta maaf, dan menanggapi dengan memperhatikan fungsi sosial, struktur teks, dan unsur kebahasaan yang benar dan sesuai konteks.

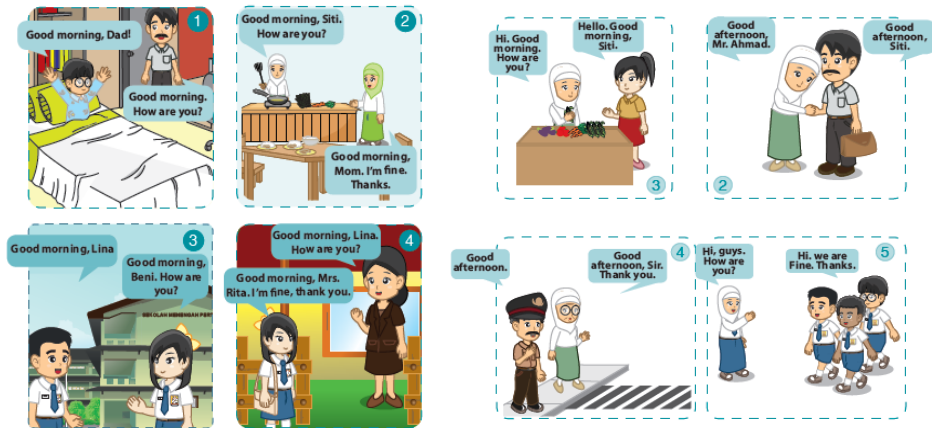
### C. INDIKATOR

1. Menunjukkan sikap sungguh-sungguh dalam belajar
2. Menunjukkan sikap jujur, disiplin, percaya diri, dan bertanggung jawab, peduli, kerjasama, dan cinta damai dalam melaksanakan komunikasi fungsional.
3. Memahami, menyatakan, dan menanyakan teks lisan berupa ungkapan sapaan, pamitan, ucapan terimakasih, dan permintaan maaf serta responnya.
4. Menggunakan struktur lisan berupa ungkapan sapaan, pamitan, ucapan terimakasih, dan permintaan maaf, serta responnya yang runtut dan tepat.
5. Menggunakan unsur-unsur kebahasaan (intonasi, ucapan dan tekanan kata) dalam teks lisan berupa ungkapan-ungkapan sapaan, pamitan, ucapan terima kasih, dan permintaan maaf, serta responnya yang benar.

### D. MATERI PEMBELAJARAN

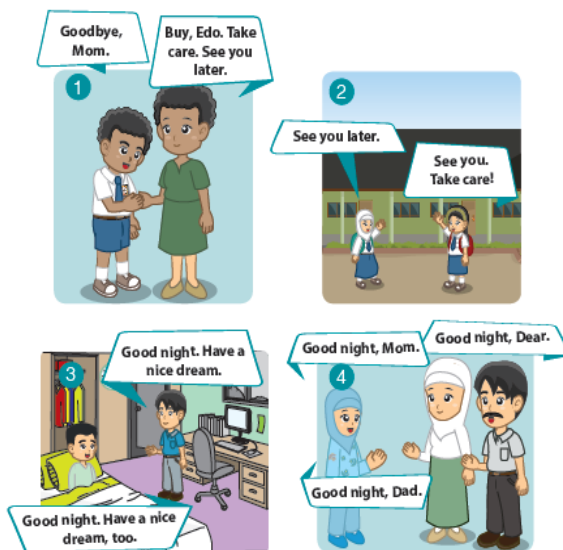
#### 1. Ungkapan Sapaan

<b>Greetings</b>	<b>Responses</b>
<b>Good morning</b>	<b>Good morning/ Morning</b>
<b>Good afternoon</b>	<b>Good afternoon/ Afternoon</b>
<b>Good evening</b>	<b>Good evening/ Evening</b>
<b>How are you?</b>	<b>Fine/ I'm fine</b>
<b>How are you doing?</b>	<b>Great/ Not bad/ Very well/ Never better</b>
<b>How's everything with you?</b>	
<b>How's life?</b>	
<b>Hello</b>	<b>Hello/ Hi</b>
<b>Hi</b>	<b>Hi/ Hello</b>
<b>Greetings</b>	<b>Responses</b>



2. Ungkapan Pamitan

Leave-taking	Responses
It was nice to meet you.	It was good to see you.
Nice to see you again.	Nice to see you.
I have (got) to go.	OK. See you.
Good night.	Good night.
Good bye.	Good bye.
Have a nice day/ weekend	You, too.
Bye.	Bye.
See you later.	See you.



## E. KEGIATAN PEMBELAJARAN

**Meeting 1**

Pendahuluan (10')	<ul style="list-style-type: none"> <li>• Guru menyapa siswa dalam Bahasa Inggris</li> <li>• Guru memeriksa kehadiran siswa</li> <li>• Guru mengaitkan materi pembelajaran dengan pengalaman peserta didik atau pembelajaran sebelumnya</li> <li>• Guru menyampaikan tujuan pembelajaran</li> <li>• Guru mendemonstrasikan sesuatu yang terkait dengan tema</li> <li>• Guru menyampaikan kemampuan yang akan dicapai peserta didik</li> <li>• Guru menyampaikan rencana kegiatan</li> </ul>
Kegiatan Inti (60')	<p><b>Mengamati</b></p> <ul style="list-style-type: none"> <li>• Dengan bimbingan guru siswa mengamati beberapa gambar / spinner yang memperlihatkan tema yang akan dipelajari</li> <li>• Dengan bimbingan guru siswa mempelajari contoh ungkapan greeting dan thanking</li> <li>• Dengan bimbingan guru siswa mengidentifikasi pola kalimat yang digunakan dalam ungkapan greeting dan thanking</li> </ul> <p><b>Menanya</b></p> <p>Dengan bimbingan guru siswa menggali informasi dengan mengajukan pertanyaan mengenai hal-hal yang berhubungan dengan tema</p> <p><b>Mengumpulkan Informasi</b></p> <ul style="list-style-type: none"> <li>• Dengan bimbingan guru siswa mempelajari pola kalimat yang digunakan dalam ungkapan greeting dan thanking</li> <li>• Dengan bimbingan guru siswa mempelajari cara pengucapan, intonasi dan tekanan dalam ungkapan greeting dan thanking</li> </ul>

	<p><b>Mengolah Informasi</b></p> <ul style="list-style-type: none"> <li>• Dengan bimbingan guru siswa berlatih menggunakan pola kalimat yang digunakan dalam ungkapan Sapaan</li> <li>• Dengan bimbingan guru siswa berlatih cara pengucapan, intonasi dan tekanan untuk menggunakan ungkapan Sapaan</li> </ul> <p><b>Mengomunikasikan</b></p> <p>Siswa bermain peran untuk menggunakan ungkapan Sapaan</p>
Kegiatan Penutup (10')	<ul style="list-style-type: none"> <li>• Guru dan siswa melakukan refleksi pembelajaran</li> <li>• Guru memberikan tulisan</li> <li>• Guru melaksanakan tindak lanjut dengan memberikan arahan kegiatan berikutnya dan tugas pengayaan</li> </ul>

## Meeting 2

Pendahuluan (10')	<ul style="list-style-type: none"> <li>• Guru menyapa siswa dalam Bahasa Inggris</li> <li>• Guru memeriksa kehadiran siswa</li> <li>• Guru mengaitkan materi pembelajaran dengan pengalaman peserta didik atau pembelajaran sebelumnya</li> <li>• Guru menyampaikan tujuan pembelajaran</li> <li>• Guru mendemonstrasikan sesuatu yang terkait dengan tema</li> <li>• Guru menyampaikan kemampuan yang akan dicapai peserta didik</li> <li>• Guru menyampaikan rencana kegiatan</li> </ul>
Kegiatan Inti (60')	<p><b>Mengamati</b></p> <ul style="list-style-type: none"> <li>• Dengan bimbingan guru siswa mengamati spinner yang memperlihatkan tema yang akan dipelajari</li> <li>• Dengan bimbingan guru siswa mempelajari sekilas dengan yang berhubungan dengan tema</li> <li>• Dengan bimbingan guru siswa mengidentifikasi materi yang akan</li> </ul>

	<p>dipelajari</p> <p><b>Menanya</b></p> <p>Dengan bimbingan guru siswa menggali informasi dengan mengajukan pertanyaan mengenai hal-hal yang berhubungan dengan tema</p> <p><b>Mengumpulkan Informasi</b></p> <ul style="list-style-type: none"> <li>• Dengan bimbingan guru siswa mempelajari pola kalimat yang digunakan dalam ungkapan greeting dan thanking</li> <li>• Dengan bimbingan guru siswa mempelajari cara pengucapan, intonasi dan tekanan dalam ungkapan greeting dan thanking</li> </ul> <p><b>Mengolah Informasi</b></p> <ul style="list-style-type: none"> <li>• Dengan bimbingan guru siswa berlatih menggunakan pola kalimat yang digunakan dalam ungkapan Sapaan</li> <li>• Dengan bimbingan guru siswa berlatih cara pengucapan, intonasi dan tekanan untuk menggunakan ungkapan Sapaan</li> </ul> <p><b>Mengomunikasikan</b></p> <p>Siswa bermain peran untuk menggunakan ungkapan Sapaan</p>
Kegiatan Penutup (10')	<ul style="list-style-type: none"> <li>• Guru dan siswa melakukan refleksi pembelajaran</li> <li>• Guru memberikan tulisan</li> <li>• Guru melaksanakan tindak lanjut dengan memberikan arahan kegiatan berikutnya dan tugas pengayaan</li> </ul>

#### F. MEDIA DAN SUMBER BELAJAR

1. Media : white board
2. Bahan : wheel board spinner, modul kelas7, students' work sheet
3. Sumber : Modul pembelajaran kelas 7, youtube, dan English dictionary.



**APPENDIX 10**  
**DOCUMENTATION**



Pre-Test of Experimental Group



Pre-Test of Control Group



Treatment of Experimental Group



Treatment of Control Group



Post-Test of Experimental Group



Post-Test of Control Group